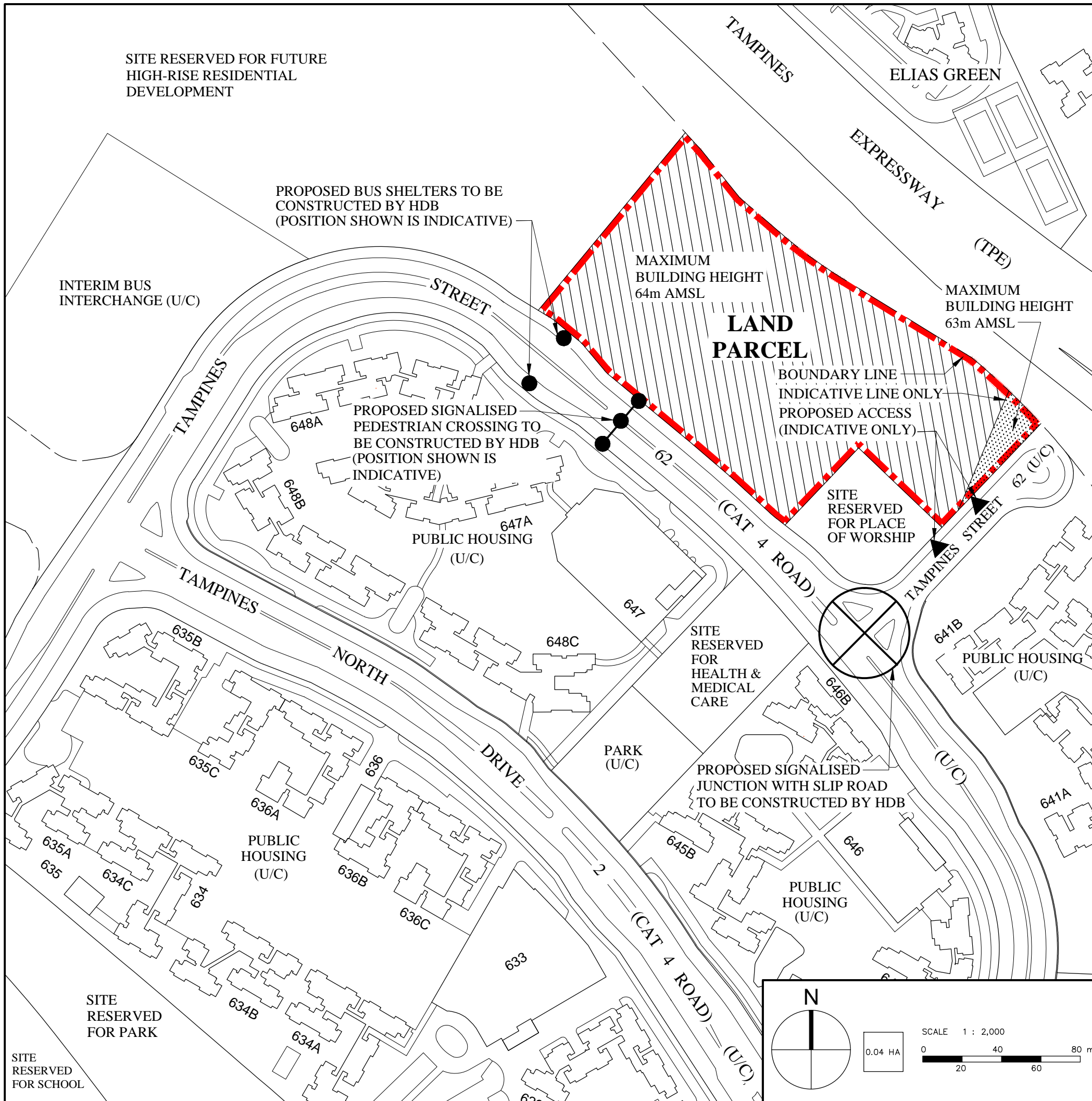


SITE RESERVED FOR FUTURE
HIGH-RISE RESIDENTIAL
DEVELOPMENT

LAND PARCEL AT TAMPINES STREET 62

(CONTROL PLAN)



NOTES:-

All proposed developments are subject to change and planning approval.

The maximum building height line shown on the control plan is indicative only and subject to clearance from the relevant authorities (URA, DSTA and CAAS).

The proposed facilities and their locations as shown are indicative only. The proposed facilities may include other ancillary uses allowed under URA's prevailing Development Control guidelines. For example, places of worship may also include columbarium as an ancillary use, while community centres may also include childcare centres. The implementation of the facilities is subject to review from time to time by the relevant authorities.

(U/C) - Under Construction

--- FUTURE ROAD

The information contained herein is subject to change at any time without notice and cannot form part of an offer or contract. While reasonable care has been taken in providing this information, HDB shall not be responsible in any way for any damage or loss suffered by any person whether directly or indirectly as a result of reliance on the said information or as a result of any error or omission therein.