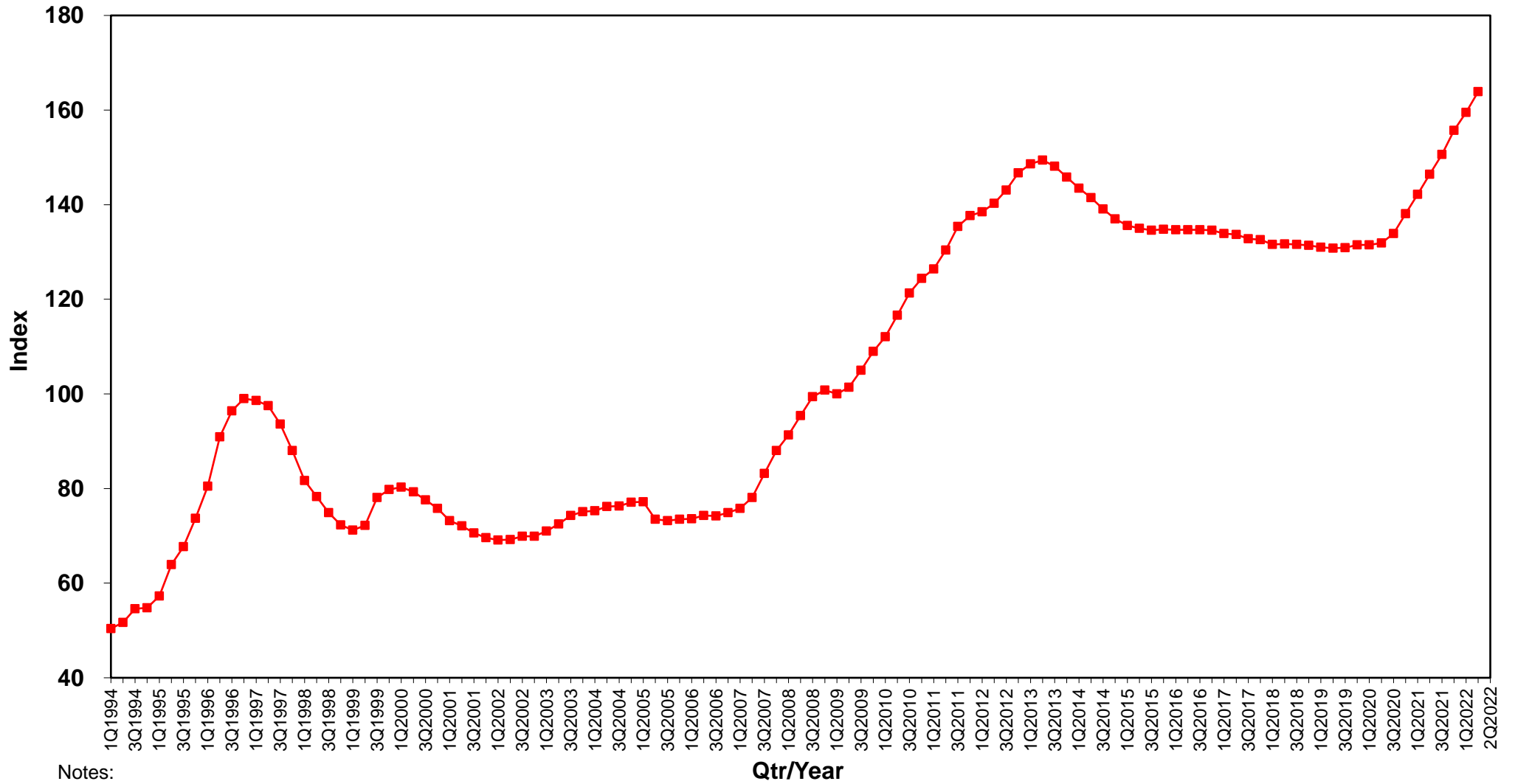


PRICE INDEX OF HDB RESALE FLATS



Notes:

- 1) 1Q2009 is adopted as the new base period with index at 100.
- 2) The index from 1Q1990 to 3Q2014 is rebased to the new base period at 1Q2009.
- 3) The index for 4Q2014 onwards is computed using the stratified hedonic regression method.