

# CHARGING FORWARD

**ELECTRIC VEHICLES ARE THE FUTURE, AND HDB HAS ALREADY LAID THE GROUNDWORK TO MAKE ITS CAR PARKS ACCOMMODATE THIS REALITY.**

**>3,000  
EV chargers**

in Singapore as at  
end-August 2022

**12,000  
EV chargers**

at HDB car parks  
by end-2025



Climate change is real, and Singapore — being a tiny island — is especially vulnerable to it. Actions must be taken to build a sustainable future.

The Singapore Green Plan 2030, which was launched in February 2021, aims to ensure sustainable development in the Lion City, while also being aligned with our commitments to the worldwide community, such as the UN's 2030 Sustainable Development Agenda. The Singapore Green Plan 2030 has several key targets, one of which is for all newly registered cars to be of cleaner-energy models from 2030.

An electric vehicle (EV) emits half the amount of carbon dioxide (CO<sub>2</sub>) compared to a car propelled by an internal combustion engine (ICE); by switching to EVs, Singapore aims to develop a greener land transport sector and significantly reduce land transport emissions.

## **Creating the infrastructure**

To encourage EV adoption, the Land Transport Authority (LTA) is progressively enhancing the EV chargers infrastructure. As of end-August 2022, more than 3,000 EV chargers have been installed across the island, including shopping malls and petrol stations. This means there are at least four

public EV chargers for every square kilometre. Under a pilot tender, a total of 390 EV chargers will be installed in 130 HDB car parks, with more to be installed further in 75 other public car parks. All these chargers are expected to complete by early 2023.

### **HDB towns to be progressively 'charged'**

HDB supports this initiative by providing car park spaces and ensuring that the required electrical infrastructure is ready for the deployment of EV chargers.

LTA has awarded a tender to five vendors for the deployment of EV chargers covering nearly 2,000 HDB car parks across Singapore. Under this tender, at least 12,000 EV chargers will be installed across all HDB car parks by the end of 2025, realising our target of making every HDB town EV-ready. With the vast majority of Singaporeans living in HDB towns, this will help boost the adoption of EVs further. With a relatively short distance between available chargers across and within towns, drivers can easily access them to maintain the charge of their EV batteries and allay any range anxiety. The EV chargers, which are mostly low-powered, will meet the needs of most car owners and minimise the load on the electrical grid.



## Recycling Rainwater

Besides collaborating with the LTA to implement more EV chargers in its car parks, HDB has implemented sustainable initiatives under the HDB Green Towns Programme (GTP). GTP is a 10-year plan to make HDB towns more sustainable and liveable, with **five focus areas**:

- Reducing Energy Consumption
- Recycling Rainwater
- Reducing Waste
- Promoting Green Commute
- Cooling HDB Towns

GTP aims to reduce energy consumption in HDB towns by 15% from 2020 levels by 2030. To achieve this target, GTP has introduced ongoing **initiatives**, such as Solar Panels, Smart LED Lighting, Greenery Intensification and Dual Bicycle Racks, to name a few, in existing HDB estates.



## Reducing Waste





## Reducing Energy Consumption

- **Solar Panels**

Solar panels will be installed on more HDB blocks to power common services with clean energy so as to achieve net-zero energy consumption in common areas during the day. HDB aims to stretch the solar target to achieve, by 2030, solar power generation of 540MWp, which is equivalent to the energy needed to power 135,000 four-room HDB flats in a year.



- **Smart LED Lighting**

Smart LED lighting will be installed in all HDB common areas, such as corridors and stairways. It incorporates motion sensors and smart analytics to reduce lighting in areas with low human and vehicular traffic, and turns on only upon detection of movement. These smart features further reduce energy consumption by up to 60% compared to conventional LED lighting.

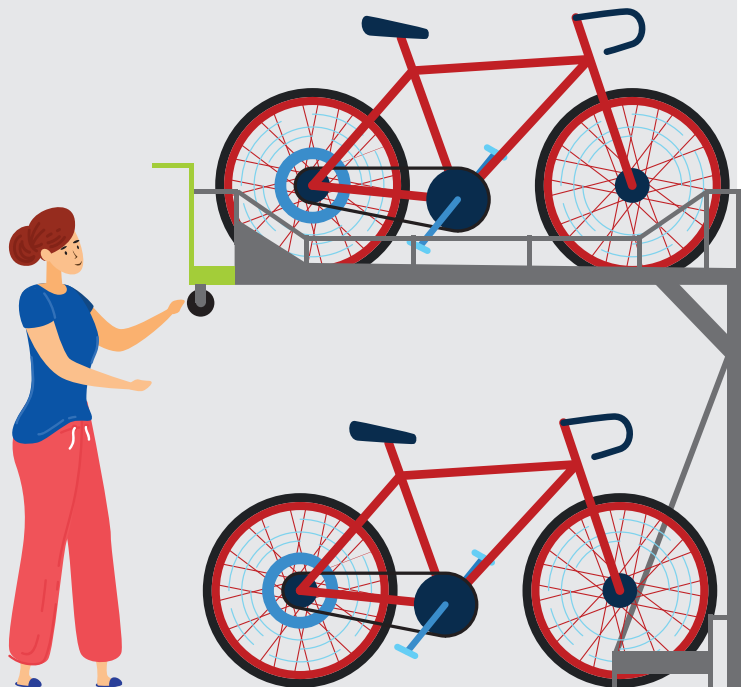




## Promoting Green Commute

- **Dual Bicycle Racks**

Dual bicycle racks will be installed island-wide to encourage higher ownership of bicycles and to support cycling as a form of ‘first mile and last mile’ commute. Designed by HDB, the dual bicycle racks optimise space by holding two bicycles within the same area required by a typical rack, thus creating neater and safer corridors.



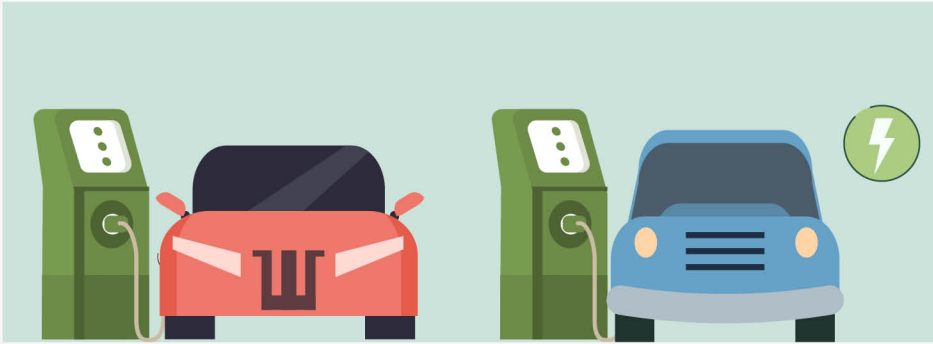




## Cooling HDB Towns

- **Greenery Intensification**

Urban farms, extensive greenery, or community/allotment gardens will be introduced to the top decks of Multi-Storey Car Parks (MSCPs). The greenery offers visual and spatial relief, cools the environment, and enhances the liveability of the estates.



To find out more about GTP, you may visit HDB InfoWEB at <https://go.gov.sg/hdbgtp> or scan the QR code:

